

Clamp pipe connection DIN 32676, flange Ø 34–319

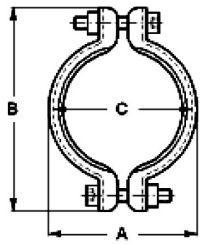
Art.No

EUR

Art.No

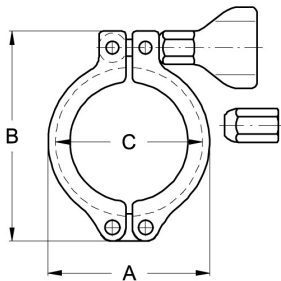
EUR

Clamping ring FL-Standard



DN	A	B	C	Ø Flange			AISI304	
25-40	58,5	85,5	54,5	50,5			210116	22,70
50	72	99	69	64			210105	24,40
2,5"	85,5	113	81,5	77,5			210106	27,00
65	99	126	95	91			210107	29,20
100	127	154	123	119			210108	33,60
115	138	165	134	130			210109	76,20
125	164	198	159	155			210110	81,00
150	192	226	187	183			210111	92,40
200	244	280	238	233,5			210112	99,60

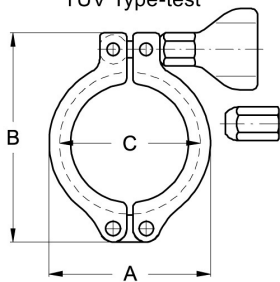
Clamping ring FL-Extra G



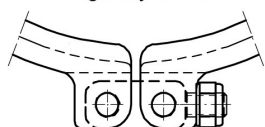
DN	A	B	C	Ø Flange		AISI304 Hexagonal nut		AISI304 Wing nut	
25-40	59	84	54,5	50,5		211816	20,80	211716	20,80
50	73	97,5	68	64		211805	21,70	211705	21,70
2,5"	86,5	112	81,5	77,5		211806	22,30	211706	22,30
65	100	125,5	95	91		211807	23,10	211707	23,10
80	115	140,5	110	106		211838	23,90	211738	23,90
100	128	153,5	123	119		211808	24,60	211708	24,60
125	166	195	159	155		211810	98,80	211710	98,80
150	194	224	187	183		211811	116,30	211711	116,30
200	244,5	277,5	237,5	233,5		211812	141,50	211712	141,50

Clamping ring FL-Stabil

TÜV Bauteilprüfung
TÜV Type-test



DN 200, DN 250, DN 300
Gelenk nachstellbar.
Hinge adjustable.



DN	A	B	C	Ø Flange		AISI304 Hexagonal nut		AISI304 Wing nut	
10-20	44	62	37	34		211160	28,20	210760	28,20
25-40	64,5	78	54,5	50,5		211116	32,20	210716	32,20
50	78	100,5	68	64		211105	35,80	210705	35,80
2,5"	91,5	115	81,5	77,5		211106	38,70	210706	38,70
65	105	129,5	95	91		211107	43,30	210707	43,30
80	120	145,5	110	106		211138	45,90	210738	45,90
100	133	159,5	123	119		211108	49,10	210708	49,10
115	144	171	134	130		211109	69,60	210709	69,60
125	175	215	159	155		211110	138,10	210710	138,10
150	203	243	187	183		211111	153,70	210711	153,70
200	253,5	295,5	237,5	233,5		211112	178,60	210712	178,60
250	291	344,5	272	268		211146	248,50	210746	248,50
300	342	399,5	323	319		211148	295,60	210748	295,60